



San Francisco
Water
Power
Sewer

Services of the San Francisco
Public Utilities Commission

**SEWER
SYSTEM**
IMPROVEMENT PROGRAM
Grey. Green. Clean.

WESTSIDE PUMP STATION
REPUBLIC OF CALIFORNIA

Sewer System Improvement Program

WW-645R Westside Pump Station (WSS)

Reliability Improvements

May 10, 2021

Vincent Mazzaferro Communications Associate
Chris Colwick Communications Manager

Our Combined Sewer System

959 Major, Local, & Brick Sewers

52 Transport/Storage, Tunnels
Force Mains, Outfalls

3 Treatment Facilities

1,011 Total Miles of Sewers

25,000 Catch Basins

North Point Wet Weather Facility



WESTSIDE

BAYSIDE



Southeast Treatment Plant



Oceanside Treatment Plant



Sewer System Improvement Program (SSIP)

Grey.



**SYSTEM AND SEISMIC
RELIABILITY &
REDUNDANCY**

Green.



**INNOVATIVE
STORMWATER
MANAGEMENT SOLUTIONS**

Clean.

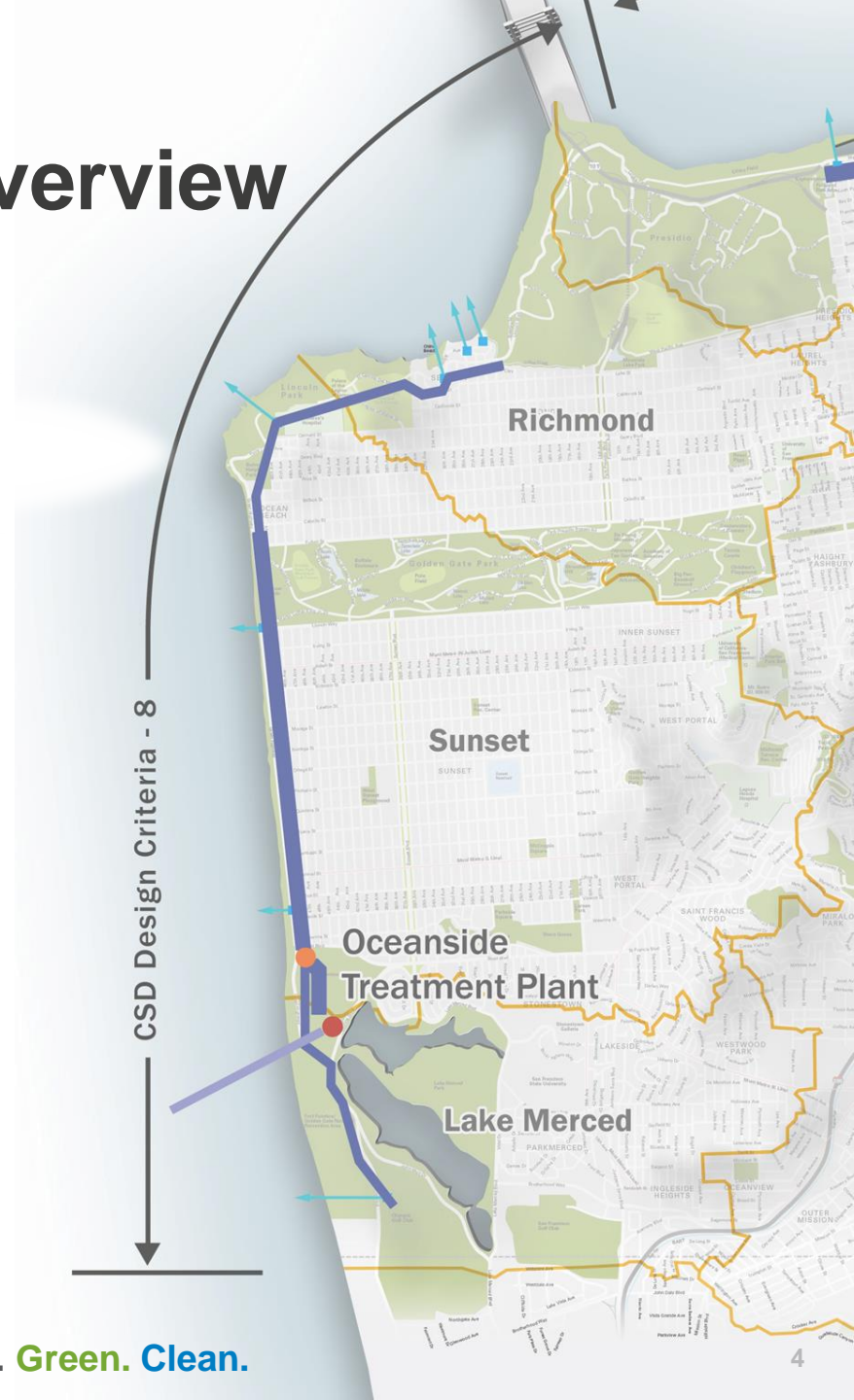


**PROTECTING PUBLIC
HEALTH
& THE ENVIRONMENT**

Sewer System: Westside Watershed Overview

The Westside Pump Station (WSS):

- Receives dry and wet weather flow from the western side of the City
- Conveys dry and wet weather flow to Oceanside Plant (OSP) for treatment.
- WSS bar screens are first point in collection system where coarse solids are removed.



WSS Reliability Improvements

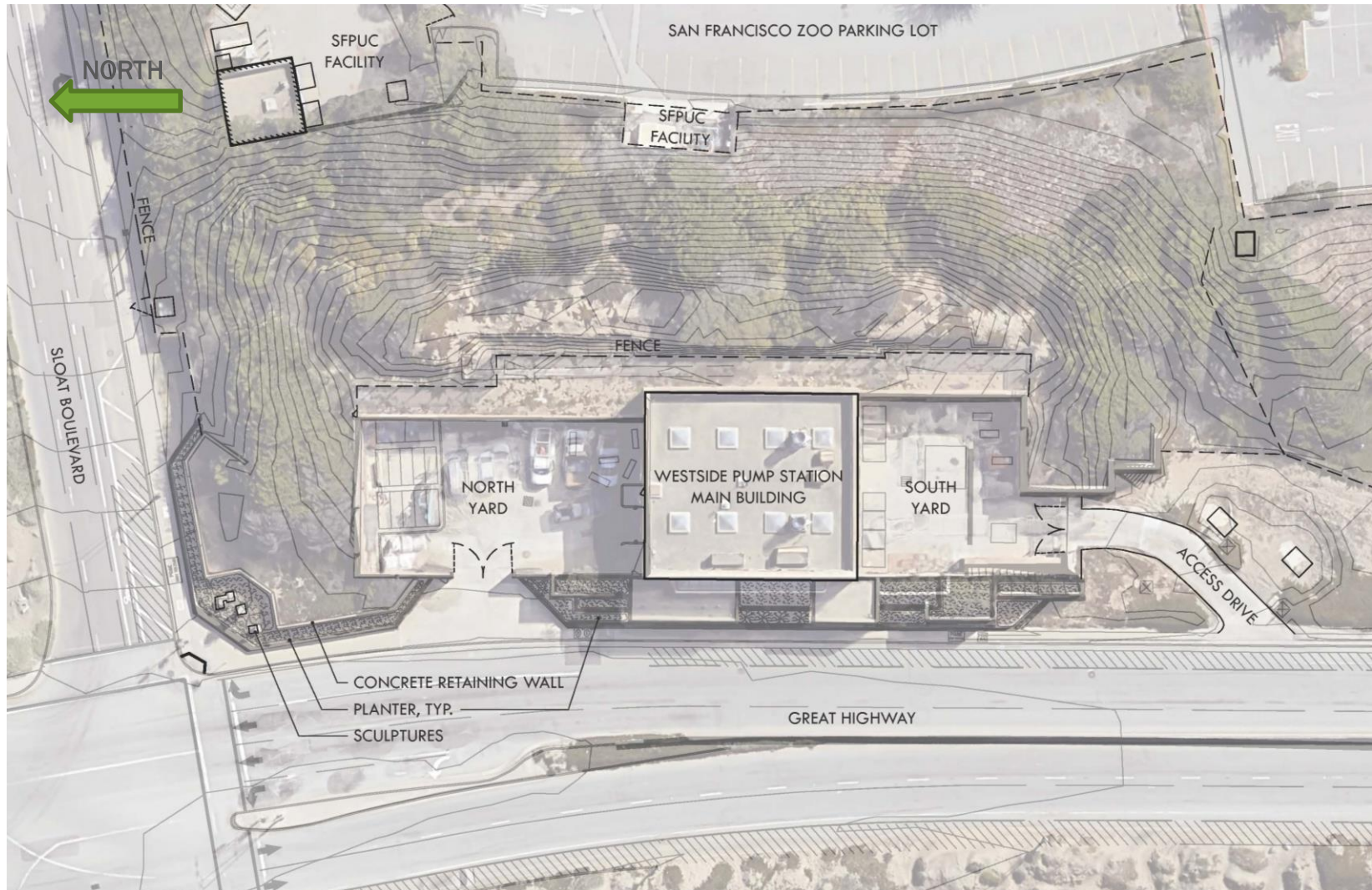
Facility Needs

- **Main Wet Weather Pumps:** Lack of redundancy, reduced efficiency
- **Bar Screens:** Lack of redundancy, frequent repair, inefficient screenings disposal process
- **Discharge Force Main Improvements:** Lack of flow capacity / reliability / redundancy
- **Electrical Power:** Single feed from PG&E is prone to outages and power capacity is limited
- **Ventilation System Improvements:** Odor control system is unused, ventilation fans require frequent repair



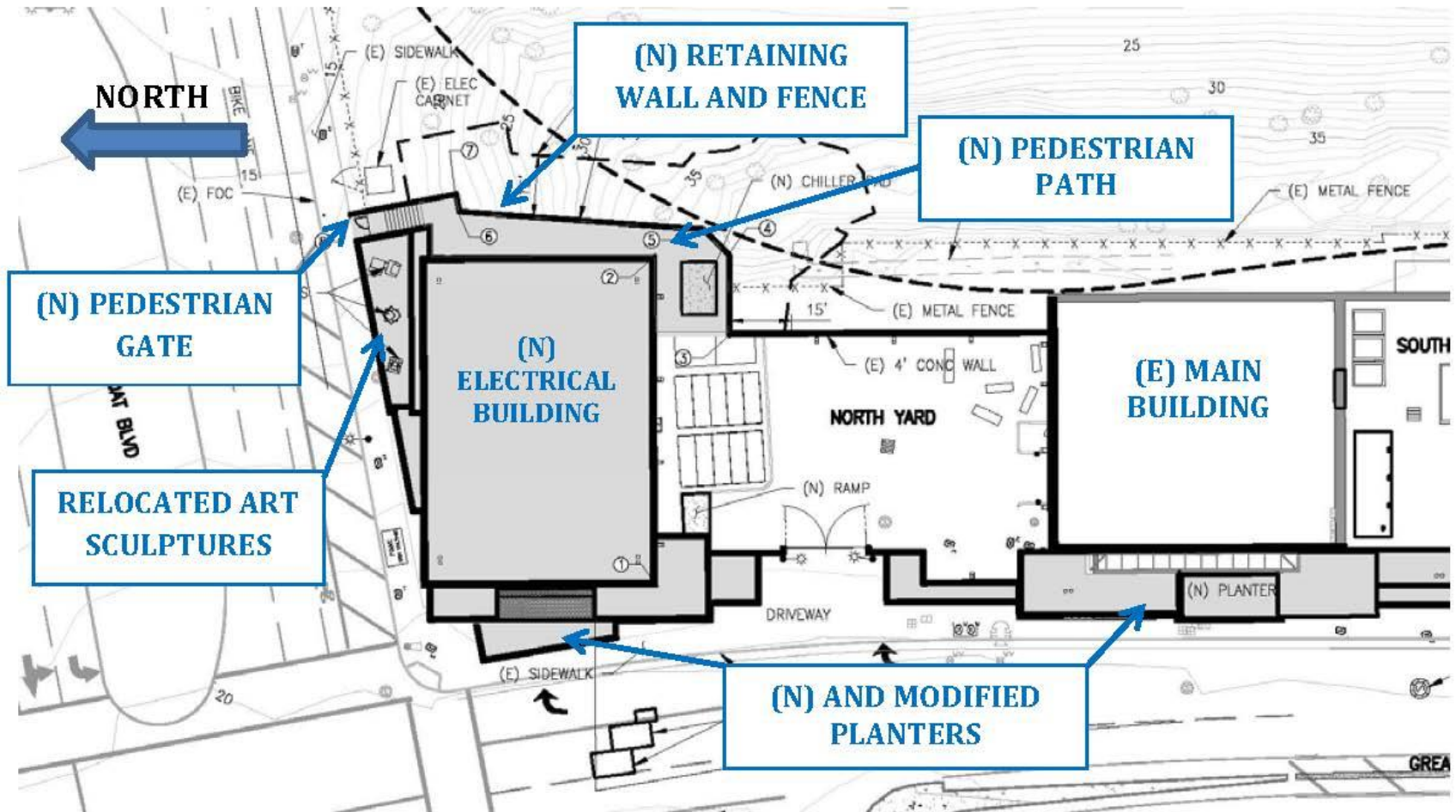
WSS Reliability Improvements

Existing Site Plan



WSS Reliability Improvements

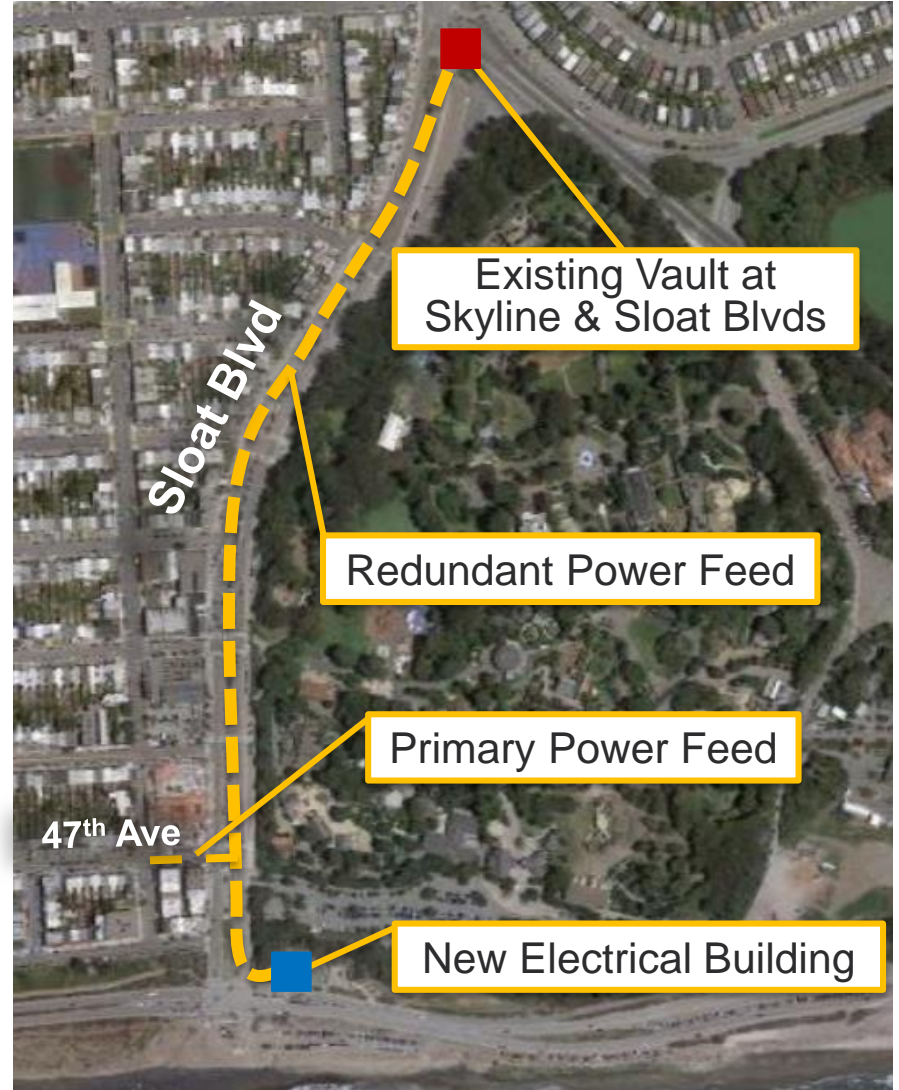
Scope of Work – Site Improvements



WSS Reliability Improvements

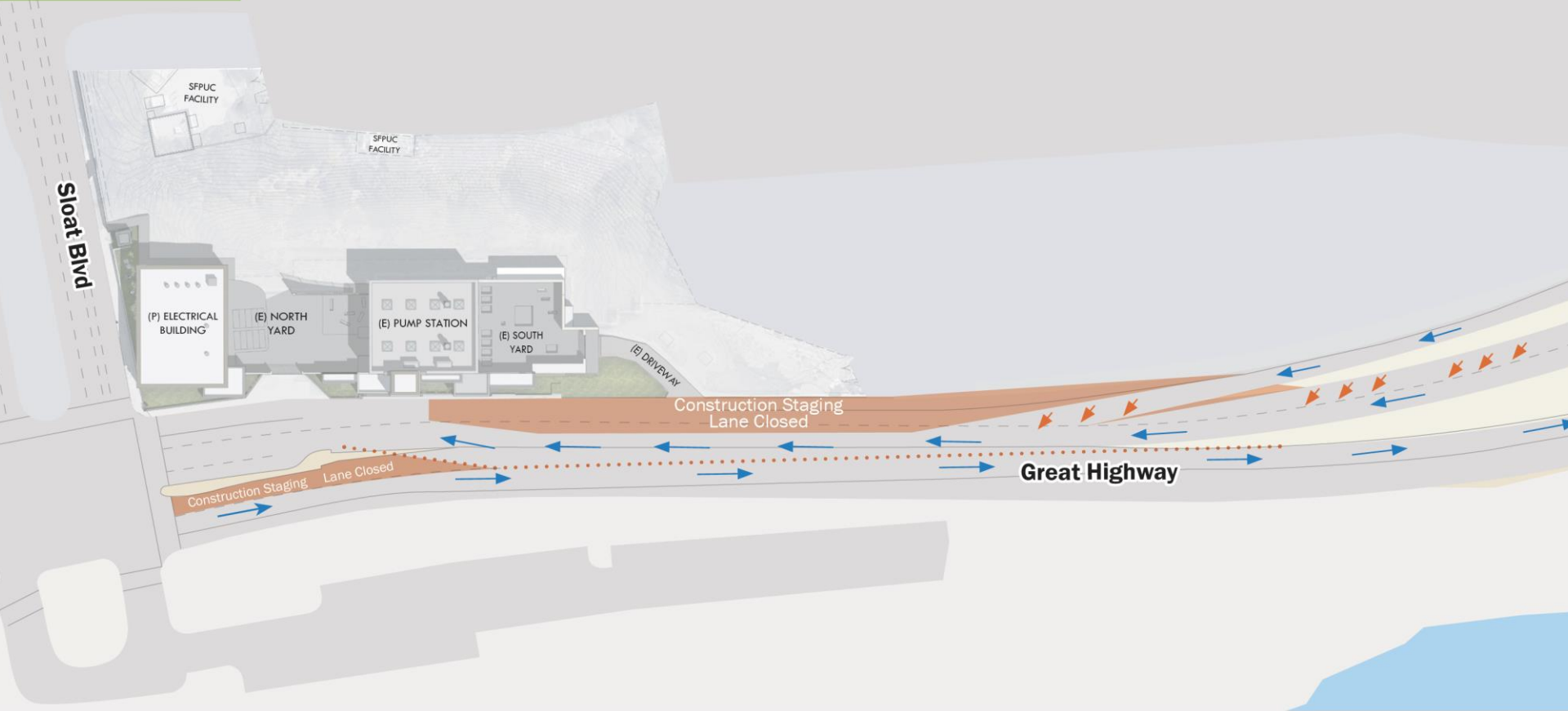
Scope of Work – PG&E Dual Power Feed

- New primary power feed from 47th Ave. and Wawona St.
- New redundant power feed from Sloat and Skyline Blvds (~3200 ft)
- Potential lane reduction. Through traffic during construction
- No parking impacts anticipated



Preliminary Construction Areas & Detour: Great Highway*

PROJECT MAP



**Subject to change, under coordination with other city partners and agencies.*

Perspective View



WSS Reliability Improvements


Construction Schedule

Estimated Construction Schedule



*TARGET START SPRING 2021 – WINTER 2024
(SUBJECT TO CHANGE)*

Noticing and Coordination


Making Upgrades

Day Construction Notice:
Westside Pump Station Reliability Project

Description: The Westside Pump Station (WSS) is an all-weather facility that pumps the sanitary and stormwater flow from the west side of the City to the Oceanside Treatment Plant. The WSS and associated facilities have been in service for numerous decades in the harsh marine environment. As part of the Sewer System Improvement Program, the San Francisco Public Utilities Commission (SFPUC) will implement improvements and modifications to ensure the WSS is reliable and operationally flexible, that it contains equipment redundancy, and remains compliant with State and Federal regulations.

Contact: SFPUC Communications, (888) 801-2661, ssip@sfpuc.org. After hours: Billy Robowski, Anvil Builders, (408) 410-6068.

When: The anticipated start date for construction is April 2021 with completion scheduled for fall 2023. Weather and/or construction issues may impact the schedule. Workdays and hours (weather permitting) are Monday – Friday, 7:00 a.m. to 4:00 p.m. Some night work and weekend work may be required, in which case advanced notice will be given.

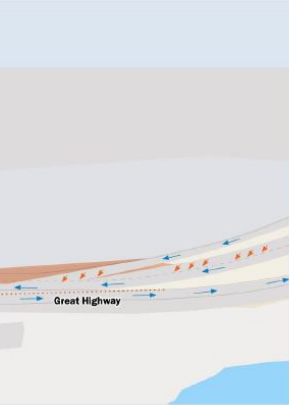
Where: Construction activities will occur within the footprint of the WSS, subsurface structures along the Great Highway, and temporarily along Sloat Boulevard between the Great Highway and Skyline Boulevard.

What to expect:

- While the contractor is required to abide by the City’s noise and vibration ordinances, neighbors should expect some noise and limited dust during this work. The project team will work to minimize disruption to normal neighborhood activity; however, there will be occasional inconveniences due to heavy equipment movement and other construction activities
- Through traffic and street parking during the work activities along Sloat Boulevard will remain open
- Construction activities and staging of equipment will be present adjacent to the WSS along the northbound lane of the Great Highway. Northbound and southbound traffic along the Great Highway between Sloat and Skyline boulevards will remain open
- Businesses and residents in the work zone will maintain access to their properties (including entries, driveways, garages), although there may be temporary delays
- Parking will be restricted in the work zone. Please see posted signs for exact details
- No interruption in sewer service is expected during construction


Sewer improvements are funded through the Sewer System Improvement Program (SSIP) – a 20-year, multi-billion dollar citywide investment required to upgrade our aging sewer infrastructure to ensure a reliable and seismically safe sewer system now and for generations to come. For more information visit sfpuc.org/SSIP.

Si necesita asistencia en español llame 415-554-3289
Kung kailangan ninyo ng tulong sa Filipino mangyaring tumawag sa (415) 554-3289.
如果您需要中文協助，請撥電 415-554-3289。



Open this notice for important information about construction

**Westside Pump Station Reliability
Construction Notice**



225 Golden Gate Avenue
SAN FRANCISCO, CA 94102

- Pre-construction notice mailed to entire project area April 2021
- Monthly coordination meeting with other City agencies ongoing
- Presentations to Supervisor offices, merchant’s groups, and neighborhood associations (Irish Cultural Center, POPS, Wastewater CAC)
- Suggestions: ways we can best coordinate updates and share information through your networks?