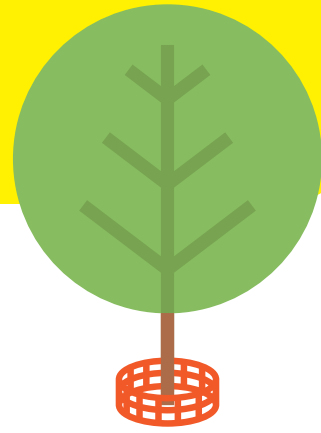


Don't Be Caught Unaware

New Pollution Prevention Requirements for the Construction Industry



FOLD LINE



Water Pollution Prevention Program
San Francisco Public Utilities Commission
City and County of San Francisco
3801 3rd Street, Suite 600
San Francisco CA, 94124
(415) 695-7310

siterunoff@sfpuc.org
www.sfpuc.org



Construction Site Runoff Resources

Questions? Contact the San Francisco Water Pollution Prevention Program at (415) 695-7310

FOLD LINE

Keep it on Site

Pollution Prevention Guide For the Construction Industry



San Francisco Public Utilities Commission

FOLD LINE



Introduction

Runoff from construction sites is a major source of water pollution, and is subject to permit requirements such as the development of a stormwater pollution prevention plan, a plan review, stormwater treatment measures, runoff monitoring and increased site inspections.

As part of our Construction Site Water Pollution Prevention Program, this brochure will assist construction professionals understand and comply with new State and Federal laws. Here, you will find valuable information on methods used on construction sites to keep pollution, such as dirt and construction site debris out of our sewage treatment system and sensitive local water bodies.

We hope to make your job easier while keeping our city clean by providing you with the information to create an efficient and environmentally safe construction site.

Together, we have the ability to preserve the quality of life in San Francisco.



Water Pollution Prevention Program
San Francisco Public Utilities Commission
City and County of San Francisco
3801 3rd Street, Suite 600 San Francisco CA, 94124

Construction Site Runoff: (415) 695-7310
www.sfpuc.org



Water Pollution Prevention Program

The goal of the Water Pollution Program is to control pollution at its source in order to maintain the quality and integrity of the Bay, ocean, creeks and lakes.

Useful links about other pollution prevention programs throughout San Francisco:

SFPUC Construction Best Management Practices Handbook:
https://sfpuc.org/sites/default/files/construction-and-contracts/design-guidelines/CSR_BMPs_2013.PDF

State Water Board
www.waterboards.ca.gov/sanfranciscobay

International BMP Database
www.bmpdatabase.org

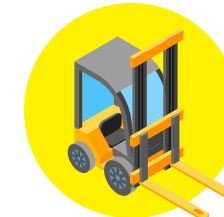
Emergency Phone Numbers

To report illegal dumping of hazardous materials or wastes to the storm drain or sewer system, call the San Francisco 311 Customer Service Center: **311**

Hazardous Spills: 911

Inspection and Enforcement Program

The Construction Site Inspection and Enforcement Program was established to ensure that all businesses operate in compliance with all appropriate stormwater laws and other City requirements. Contractors, site supervisors and property owners can be held responsible for violations, which may lead to a civil penalty of up to \$25,000 per day and reimbursing the City for all expenses associated with clean up.



Best Management Practices

Construction materials such as paint, dirt, and trash often find their way into our storm drains, jeopardizing San Francisco's sewer system, and polluting surrounding local water bodies.

Contractors are required to implement what are known as Best Management Practices (BMPs) on all construction sites. BMPs are methods used to keep pollution out of our storm drains and catch basins and off of City property such as sidewalks, streets, and alleys. Installing and maintaining these BMPs on the construction site is critical to protecting our sensitive water bodies.

If your project disturbs 5,000 or more square feet of ground surface, you are required to submit an application for a Construction Site Runoff Control Permit to the SFPUC. Below is a table summarizing the permits needed based on construction site size. Please check out the resources available here to learn more: <https://sfpuc.org/programs/pretreatment-program/construction-site-runoff>

The following is a list of BMPs and pollution prevention measures that must be implemented at all construction sites. They are separated into two categories.

Erosion and Sediment Control:

- Minimize Disturbed Areas
- Stabilize Disturbed Areas
- Protect Slopes and Channels
- Control Site Perimeter
- Retain Sediment

Non Stormwater and Waste/Material Management BMPs:

- Practice Good House Keeping
- Contain and Safely dispose materials and waste



Best Management Practices

Site Overview

This drawing illustrates Best Management Practices (BMPs) that must be followed at all construction sites in San Francisco.

1 Preserve Existing Vegetation
Preserving existing trees and vegetation where possible will prevent erosion.

2 Building Materials/Staging areas
Construction materials must be stored onsite at all times. The only exception is if you have a right-way-permit. Building materials should always be covered when not in use to prevent runoff caused by wind or rain. To apply for a right-of-way permit, contact the Bureau of Streets Use and Mapping at (415) 554-5810.

3 Concrete Trucks / Pumpers
Any concrete pumpers parked in public streets or alleys must be surrounded by perimeter controls, such as berms, gravel bags or fiber rolls. Tarps also must be placed beneath concrete pumpers at all times. Residual materials must be cleaned up as well.

4 Washout Area
The disposal of "wet" construction materials should be handled in the washout area. This includes paint, stucco, and concrete. Use a gravel bag or fiber roll and tarp to collect evaporation and prevent run-off in nearby areas. The washout area must be checked and maintained daily to ensure compliance.

5 Storm Drains and Catch Basins
Storm drains must be protected at all times with perimeter controls, such as fiber rolls or gravel bags.

6 Dirt and Grading
Mounds of dirt or gravel should be stored on site and covered each day with a tarp. When in use, all exposed dirt piles should be sprayed with water to prevent excessive dust. Tarps must be available and onsite to cover 125% of exposed areas during the rainy season (October-April).

7 Earthmoving Equipment
All earthmoving equipment should be stored onsite. Maintenance and repair should never be conducted on the site. All tracks and trails left by equipment leading to and from the site should be cleaned up immediately.

8 Construction Site Stone or Rock Access Drives
Stone or rock access drives at any construction site should be made of 3-4 inch fractured stone aggregate with a geo-textile liner below the grade of the road. This is to be used by all vehicles to limit tracks of mud onto the streets.

9 Dumpsters
Keep dumpsters covered. Areas around dumpsters should be swept daily.

10 Paint and Stucco
All paint and stucco materials stored on the site must be contained and covered. It is illegal for contractors to wash out paintbrushes in the street or dump any residues in the sewer or the storm drain. Paintbrushes and spray guns shall be washed/cleaned out into a hazardous materials barrel or put back into its original container and disposed of properly. Latex paint should be dried in its container and placed in the garbage. Oil paint and thinners need to be recycled as hazardous wastes.

11 Perimeter Controls
Gravel bags, silt fences, and fiber rolls are acceptable perimeter controls, and shall be used to surround the entire site. Upstream perimeter controls prevent water from running into your site and downstream controls prevent sediment from leaving your site. Avoid running over perimeter controls with vehicles or heavy equipment, as they can damage the materials. Replace any damaged perimeter controls immediately. Keep extra absorbent materials and/or a wet/dry vacuum on site to quickly pick up unintended spills. Sites must also be checked and maintained daily.

Dewatering Activities
A batch discharge permit is required before releasing any construction site wastewater. Call 415-695-7310 for more information.



Water Pollution Prevention Program
San Francisco Public Utilities Commission
City and County of San Francisco
3801 3rd Street, Suite 600
San Francisco CA, 94124
(415) 695-7310

siterunoff@sfgwater.org
www.sfpuc.org

Questions? Contact the San Francisco Water Pollution Prevention Program at (415) 695-7310