



HETCH HETCHY

WATER SYSTEM IMPROVEMENT PROGRAM



WSIP Habitat Compensation

CUW-38802

Greg Lyman

January 13, 2014

WSIP Habitat Compensation Purpose

Satisfy legal obligations

- CEQA Mitigation Requirements
- Resource Agency Permit Requirements
 - Habitat Creation and Enhancement
 - Performance Period Monitoring
 - Financial Assurances for Implementation
 - Financial Assurances for Stewardship
 - Property Protections

WSIP Habitat Compensation Strategy

Consolidated habitat compensation was coordinated with:

- US Army Corps of Engineers
- US Fish and Wildlife Service
- San Francisco Regional Water Board
- California Department of Fish and Wildlife

WSIP Habitat Compensation Scope

Locate, design, construct, monitor and manage in perpetuity WSIP compensation sites in a consolidated manner

Environmental Benefits

- Focuses on Habitat and Species Compensation
- Consolidates WSIP compensation into larger ecosystem habitat projects
- Reduces impacts to natural resources from construction and fragmentation
- Improves SFPUC relationship with Resource Agencies

WSIP Habitat Compensation Status

Overall Project 70% Complete

Planning 100%

Environmental 98%

Design 98%

Project Management 92%

Construction 61%

Property Encumbrance 46%

WSIP Habitat Compensation for

San Joaquin Projects:

- San Joaquin Pipeline System
- Rehabilitation of Existing San Joaquin Pipeline
- Tesla Treatment Facility

Sunol Projects:

- Alameda Siphons 4
- Sunol Valley Water Treatment Plant
- New Irvington Tunnel
- Calaveras Dam Replacement Project
- San Antonio Back-up Pipeline

WSIP Habitat Compensation for

Bay Division Projects:

- Seismic Upgrade of Bay Division Pipeline 3 and 4
- Bay Division Pipeline Reliability - Tunnel
- Bay Division Pipeline Reliability - Pipeline

Peninsula Projects:

- New Crystal Springs Bypass Tunnel
- Pulgas Discharge Channel
- Crystal Springs – San Andreas Transmission
- Lower Crystal Springs Dam Improvement
- Crystal Springs Pipeline 2

WSIP Habitat Compensation

Alameda

7 Compensation Sites

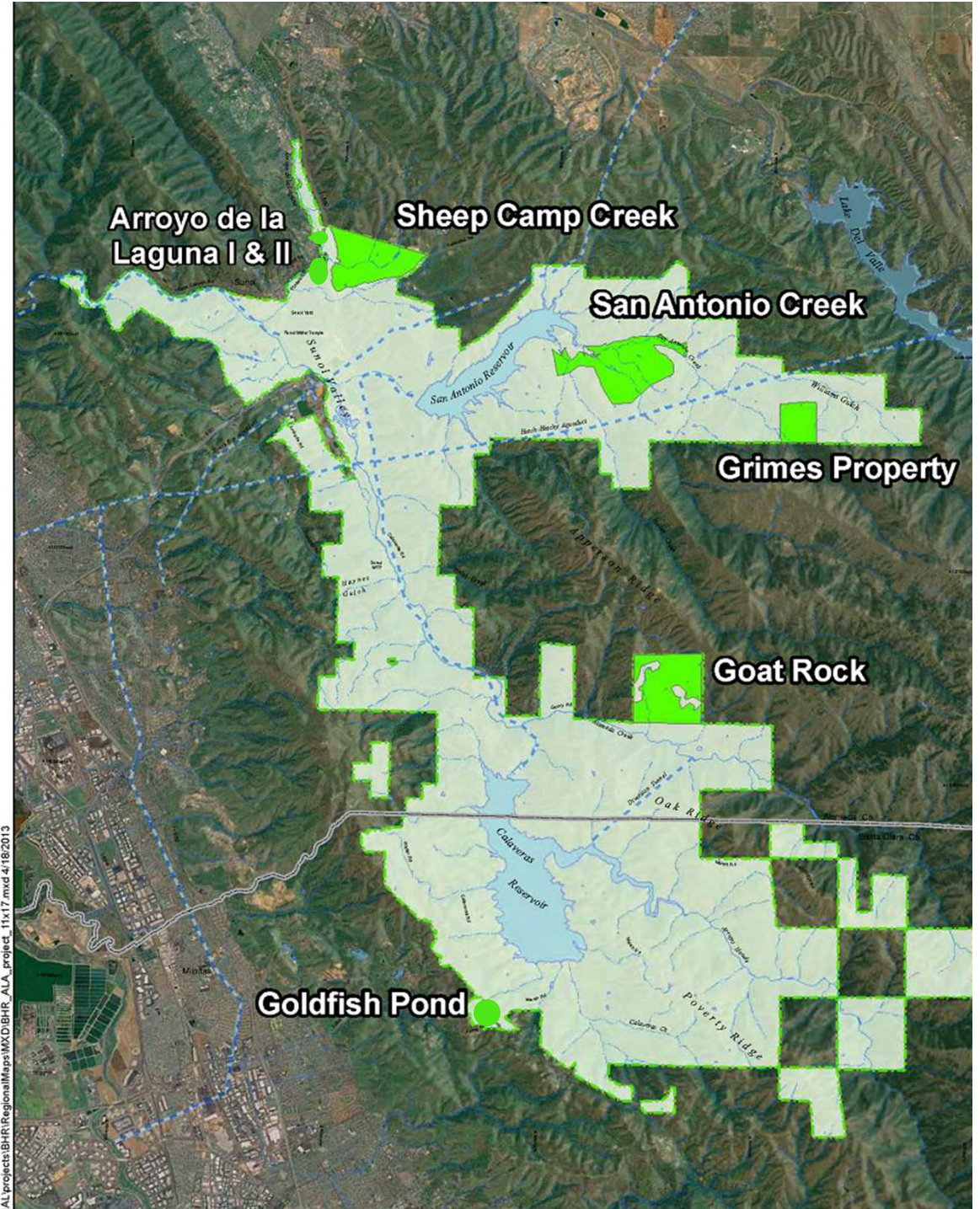
Approximately 1,800 acres

Habitats:

- Seasonal Wetlands
- Riparian Forest
- Oak Woodlands
- Serpentine Grasslands

Species:

- California red-legged frog
- California tiger salamander
- Alameda whipsnake
- Callipe silver spot butterfly



Gold Fish Pond



Before

January 2013

July 2012

Gold Fish Pond



April 2013

Gold Fish Pond



January 2013

Gold Fish Pond



October 2012

San Antonio Creek



October 2012

San Antonio Creek



December 2011

San Antonio Creek



San Antonio Creek

October 2012



April 2013

San Antonio Creek



October 2012

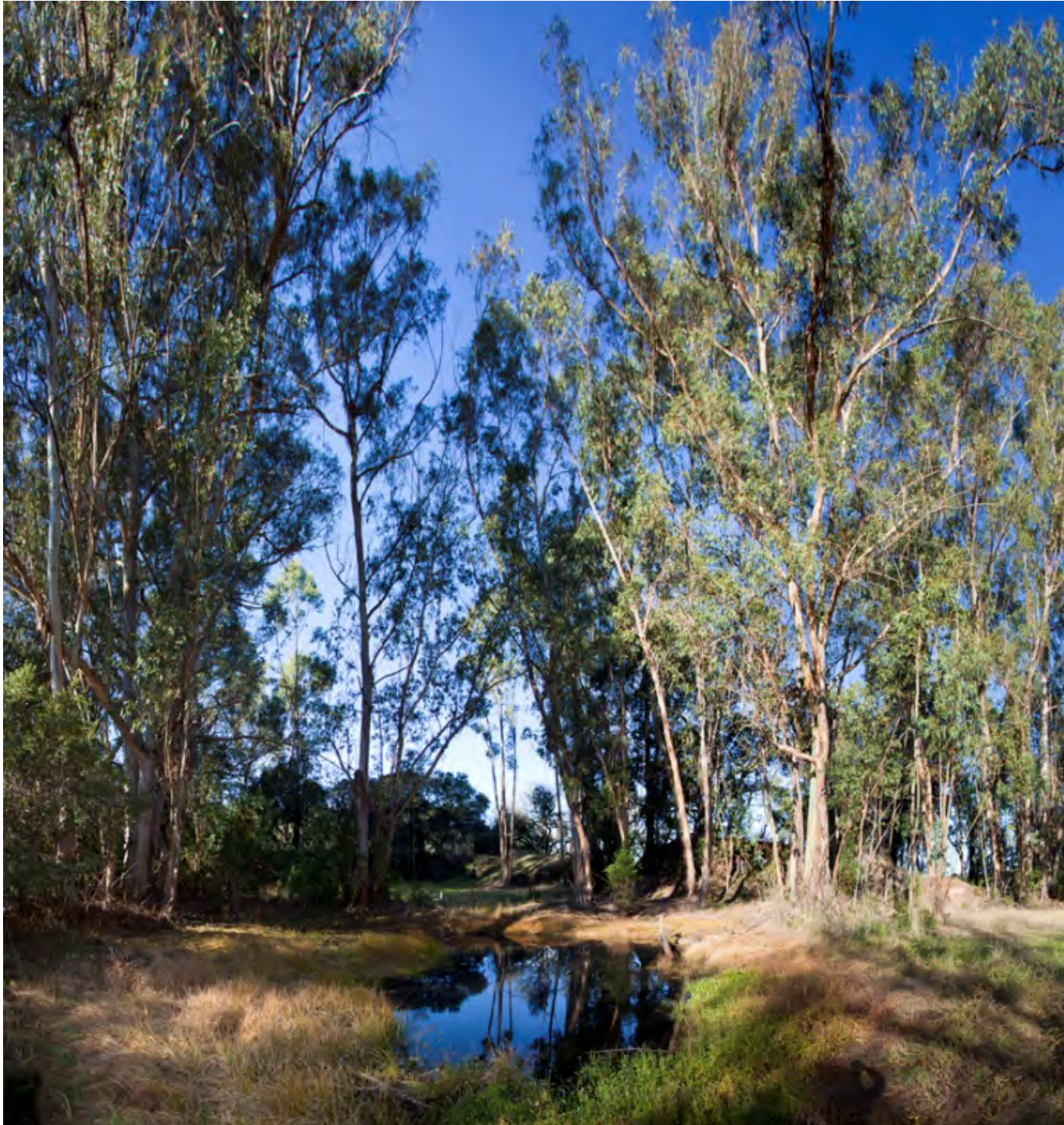
San Antonio Creek



October 2012

San Antonio Creek





Homestead Pond

Before

Homestead Pond

October 2012



January 2013

Homestead Pond



April 2013

Homestead Pond



Before

San Andreas Res.



July 2012

San Andreas Res.



October 2012

San Andreas Res.



January 2013

San Andreas Res.



January 2013

San Andreas Res.



April 2013

San Andreas Res.



April 2013

Skyline Blvd.



January 2013

Adobe Gulch Creek



April 2013

Adobe Gulch Creek



January 2013

Adobe Gulch Grasslands



January 2013

Adobe Gulch Grasslands



January 2013

Adobe Gulch Grasslands



January 2013

Adobe Gulch Grasslands



WSIP Habitat Compensation Components

- Environmental Review and Permitting
- Design and Construction
- Property and Habitat Mitigation Credits Acquisition
- Financial Assurances
- SFPUC Property Encumbrance
- Performance Monitoring and Stewardship



WSIP Habitat Compensation Off Site

- Resource Agency identified projects
- Habitat mitigation credits from habitat conservation programs and mitigation banks
- Projects on private land
- Land and conservation easement acquisition



Performance Monitoring and Perpetual Stewardship

- Required by Resources Agency Laws
- Monitoring for up to 10 years after WSIP to satisfy WSIP project permits
- Perpetual Monitoring
- Perpetual Maintenance

Financial Assurances and Property Encumbrances

- Permits require SFPUC to provide funding assurances for Performance Monitoring and Perpetual Maintenance
- Proposal combines Special Account funded by Bond Proceeds (taxed) and annual appropriations
- SB1094 Allows City and County of San Francisco to hold endowment account

Conservation Easements require Commission and Board of Supervisor approvals

Questions?



WSIP Habitat Compensation

CUW-38802

Greg Lyman

January 13, 2014