



WE DELIVER

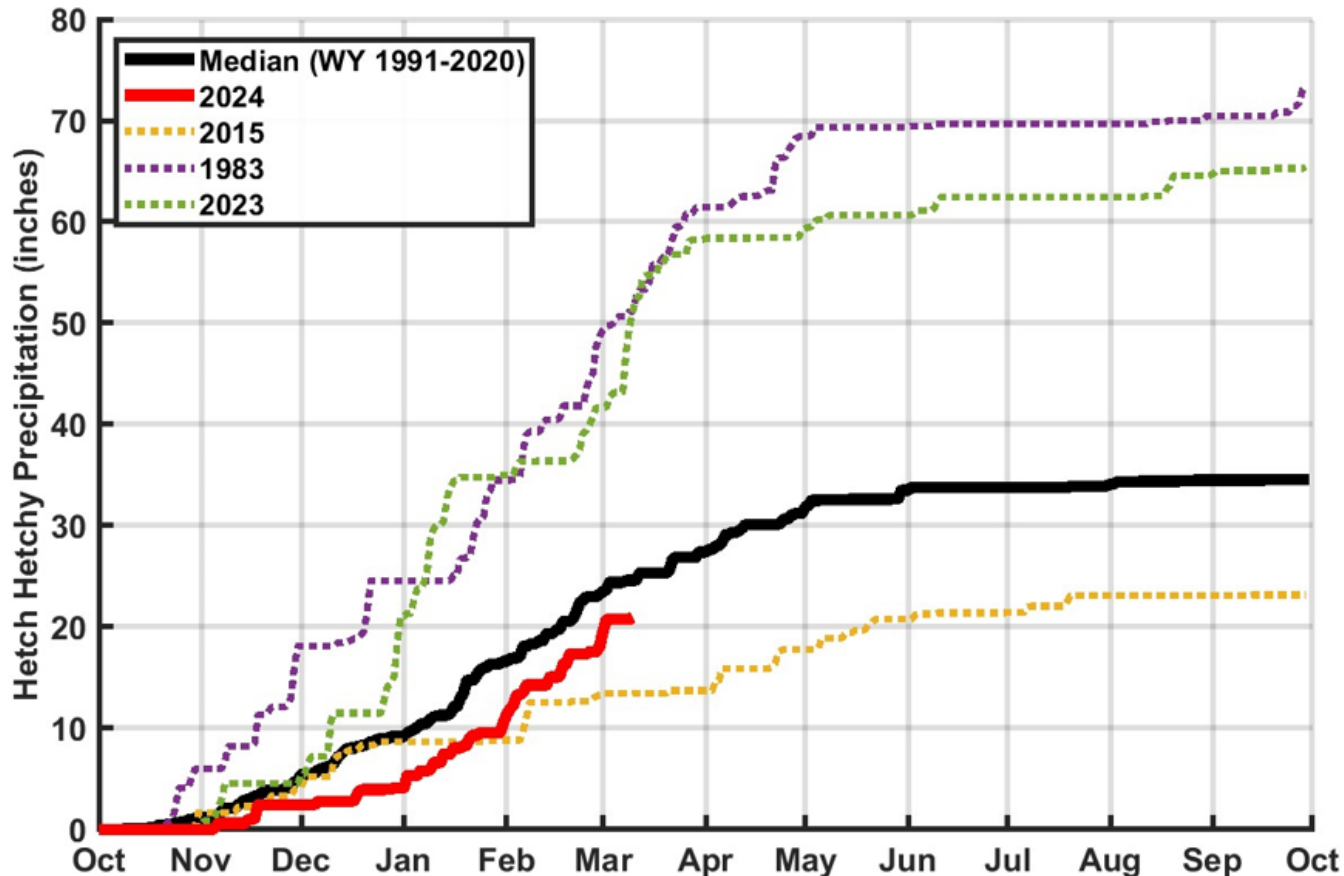
March 11, 2024



San Francisco
Water Power Sewer

Services of the San Francisco Public Utilities Commission

Precipitation at Hetch Hetchy Water Year 2023



A new water year (WY) starts every October. The graph charts cumulative precipitation at Hetch Hetchy Reservoir as the WY progresses. Precipitation is shown as a percentage of average, and curves for the current year and past year are shown. Cumulative precipitation curves for both dry and wet years are also shown, as well as a median. Why 1977? – It is the driest year on record. Why 1983? – It is the wettest year on record.

Reservoir Storage Levels

Storage as of: 11-Mar-2024

An acre foot is the volume of one acre of surface area (150 by 290 feet — 10 feet shorter than a football field) to a depth of one foot, also equal to approximately 325,851 gallons.

On average, 1 acre foot of water is enough to meet the demands of 4 people for a year. Tuolumne System storage includes Hetch Hetchy, Cherry (Lloyd), and Eleanor Reservoirs.

Local system includes Crystal Springs, Calaveras, San Antonio, San Andreas, and Pilarcitos Reservoirs.

Reservoir	Current Storage ^{1,2,3} (AF)	Maximum Storage ⁴ (AF)	Available Capacity (AF)	Percent of Maximum Storage	Normal Percent of Maximum Storage ⁵
<u>Tuolumne System</u>					
Hetch Hetchy	320,500	360,360	39,860	88.9%	63.9%
Cherry	240,600	273,345	32,745	88.0%	-
Eleanor	23,590	27,100	3,510	87.0%	-
Water Bank	570,000	570,000	0	100.0%	99.2%
Total Tuolumne Storage	1,154,690	1,230,805	76,115	93.8%	-
<u>Local System</u>					
Calaveras	92,604	96,670	4,066	95.8%	-
San Antonio	49,969	53,266	3,297	93.8%	-
Crystal Springs	44,352	68,953	24,601	64.3%	-
San Andreas	14,702	18,675	3,973	78.7%	-
Pilarcitos	2,503	3,125	622	80.1%	-
Total Local Storage	204,130	240,689	36,559	84.8%	-
Total System Storage	1,358,820	1,471,494	112,674	92.3%	79.9%
Total without water bank	788,820	901,494	112,674	87.5%	-

¹ Upcountry storage is the date's 8AM storage value taken from USGS data

² Water bank storage reported by HHWP for 03/10/2024

³ Local storage is the date's 8AM storage value taken from USGS data

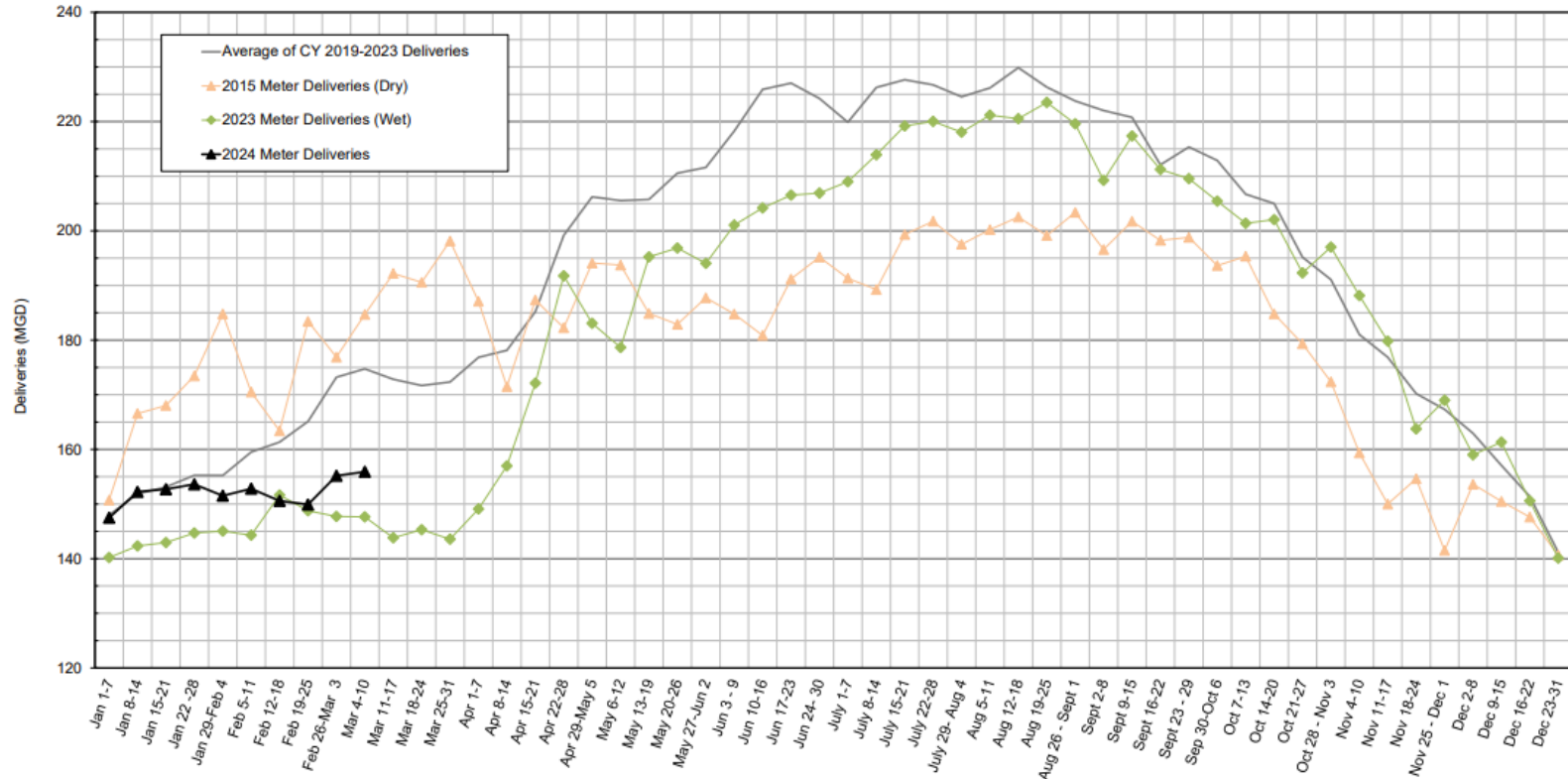
⁴ Hetch Hetchy maximum storage is with drum gates activated. Cherry and Eleanor maximum storage is with flashboards in. All maximum storages taken from rating curve.

⁵ The ratio of median storage for this day over maximum storage capacity. Median storage for this day is based on historical storage data from years 1991 - 2020

Total Deliveries – Total Service Area

--- Provisional Data Subject to Revision ---

SFPUC Regional Water System - Meter Deliveries
Total SFPUC Service Area
Source: SFPUC Regional Water System County Meters

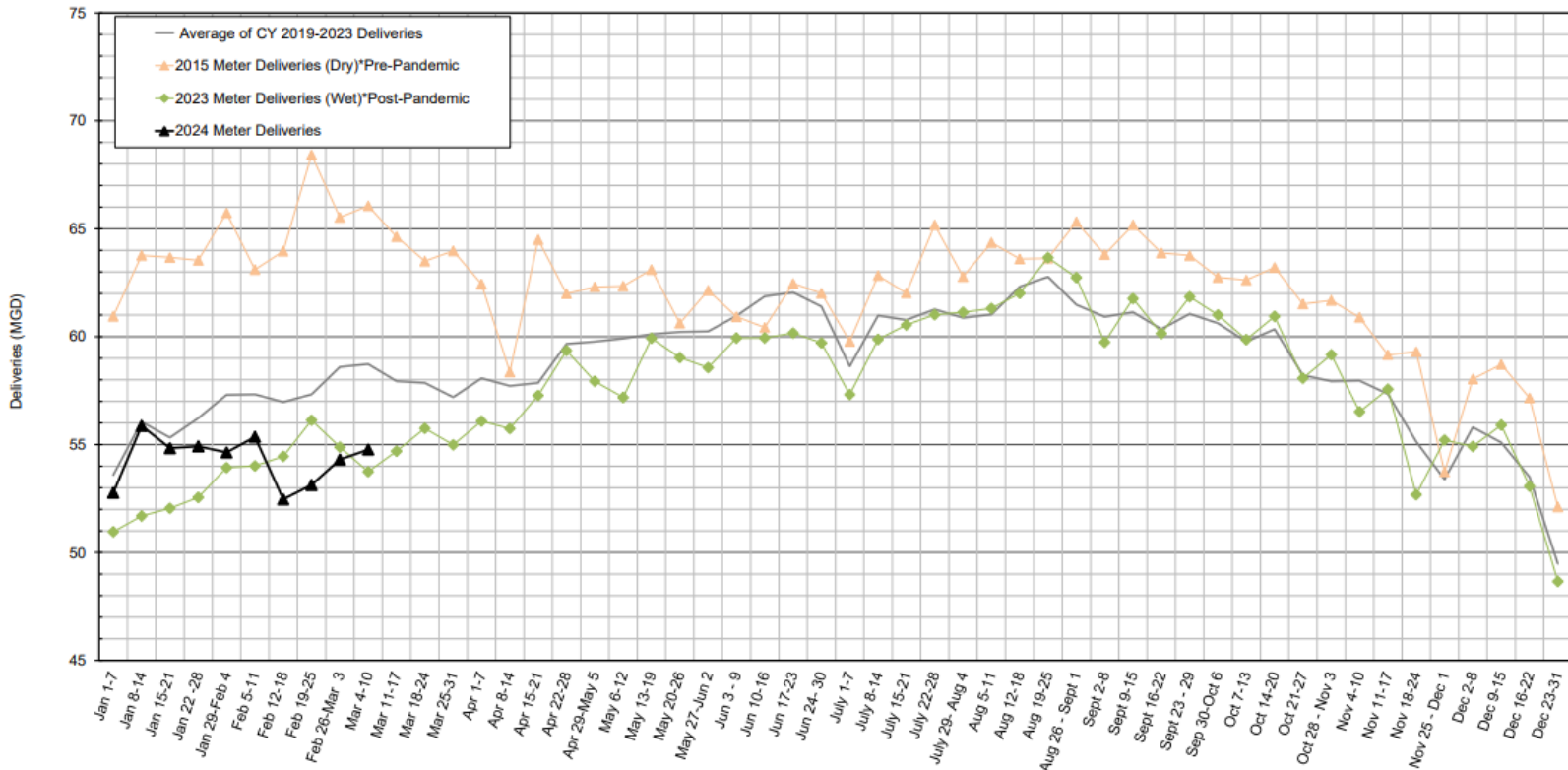


We provide water to 2.7 million residents in the greater Bay Area. Our total service area includes customers in the City and County of San Francisco; as well as Wholesale customers in the Peninsula, South Bay, and East Bay Communities.

Total Deliveries – SF Customers

----- Provisional Data Subject to Revision -----

SFPUC Regional Water System - Meter Deliveries
San Francisco Customers
Source: SFPUC Regional Water System County Meters

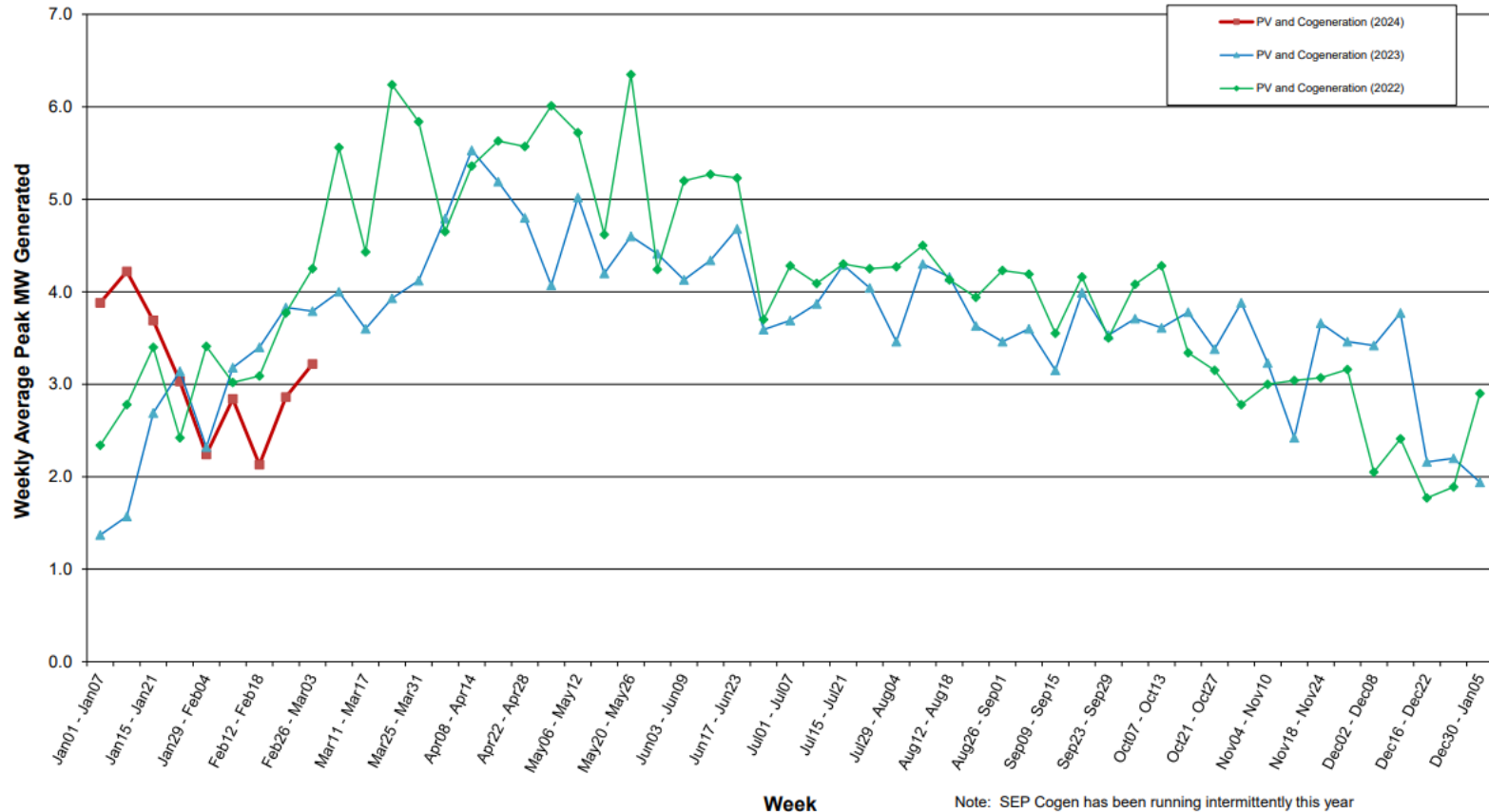


We provide water to 2.7 million residents in the greater Bay Area. "San Francisco Customers" include water metered at the San Francisco County Line, which serves customers in the City and County of San Francisco.

Photovoltaic Gen & Metered Cogeneration

PV Generation and Metered Cogeneration

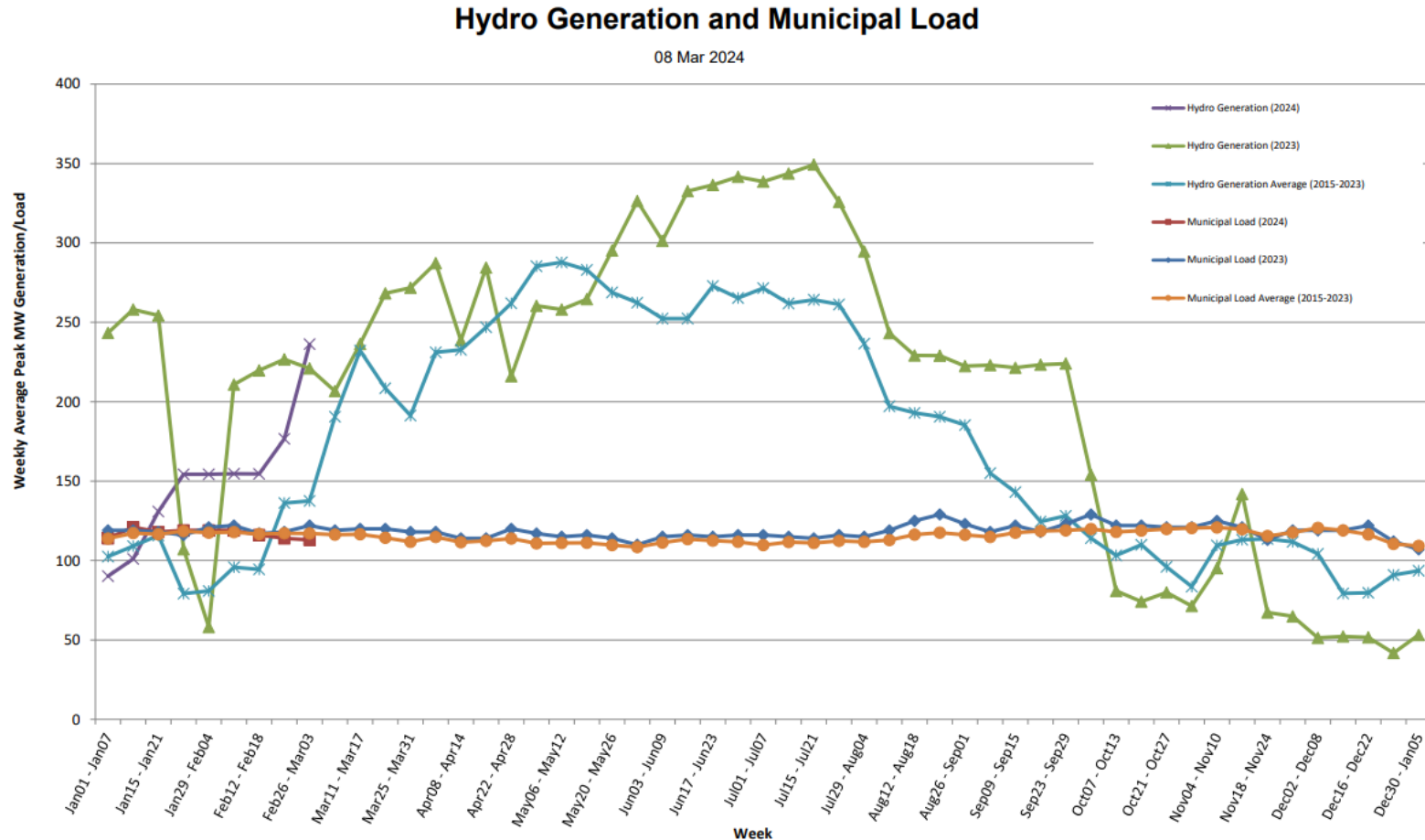
08 Mar 2024



Solar Photovoltaic (PV) technology uses semiconductors to convert solar radiation into DC Electricity. Cogeneration is the process of capturing and using the by-products of electrical generation or wastewater treatment facilities. In the case of wastewater treatment facilities, cogeneration systems use the anaerobic digester gas to generate electricity. Rather than directly releasing these by-products back into the environment, they can be used to generate electricity for the facility.

MW=megawatts

Hydro Generation & Municipal Load



Municipal load is the amount of energy needed to power our municipal facilities. On average that is about 120 MW. These facilities include the San Francisco Municipal Railway, SF General Hospital, SF Unified School District, SFO, SFPD, SFFD, the Port of SF, and the SFPUC's regional and local water and wastewater systems. Hydropower is produced at Kirkwood, Moccasin, and Holm powerhouses.